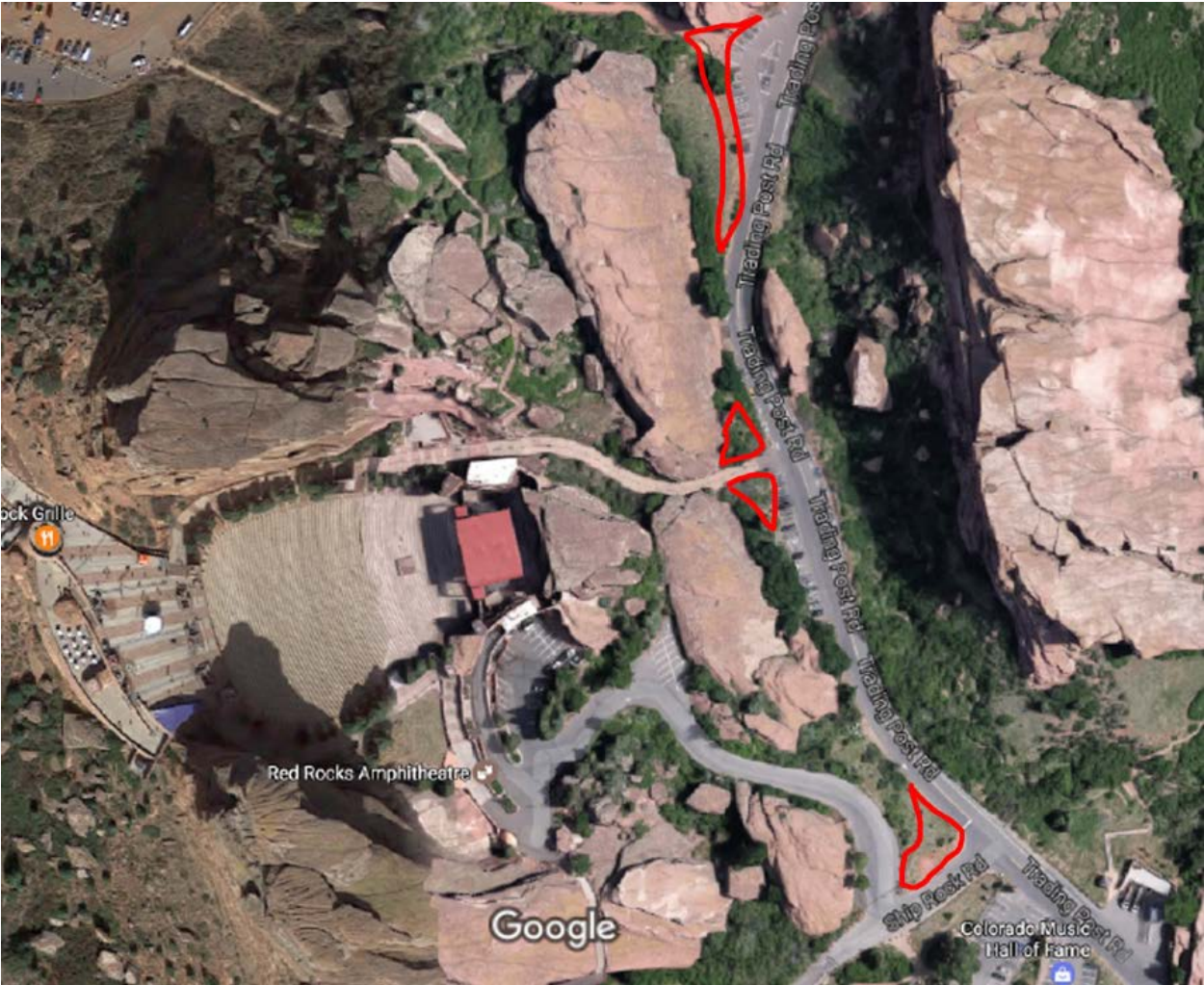


Possible Sites for Public Art at Red Rocks Amphitheatre and Park

Trading Post Road



Areas along Trading Post Road that are possible sites for permanent or semi-permanent public art.

Red Rocks Box Office



Areas near the Red Rocks Box Office that are possible sites for permanent or semi-permanent public art.

Trading Post and swale near parking lot



The areas around the Red Rocks Trading Post and along the large swale near the parking lot are possible sites for permanent or semi-permanent public art.

Upper Parking Lot



Areas leading up to the roundabout, and along the newly installed swales in the upper parking lot are possible sites for permanent or semi-permanent public art.